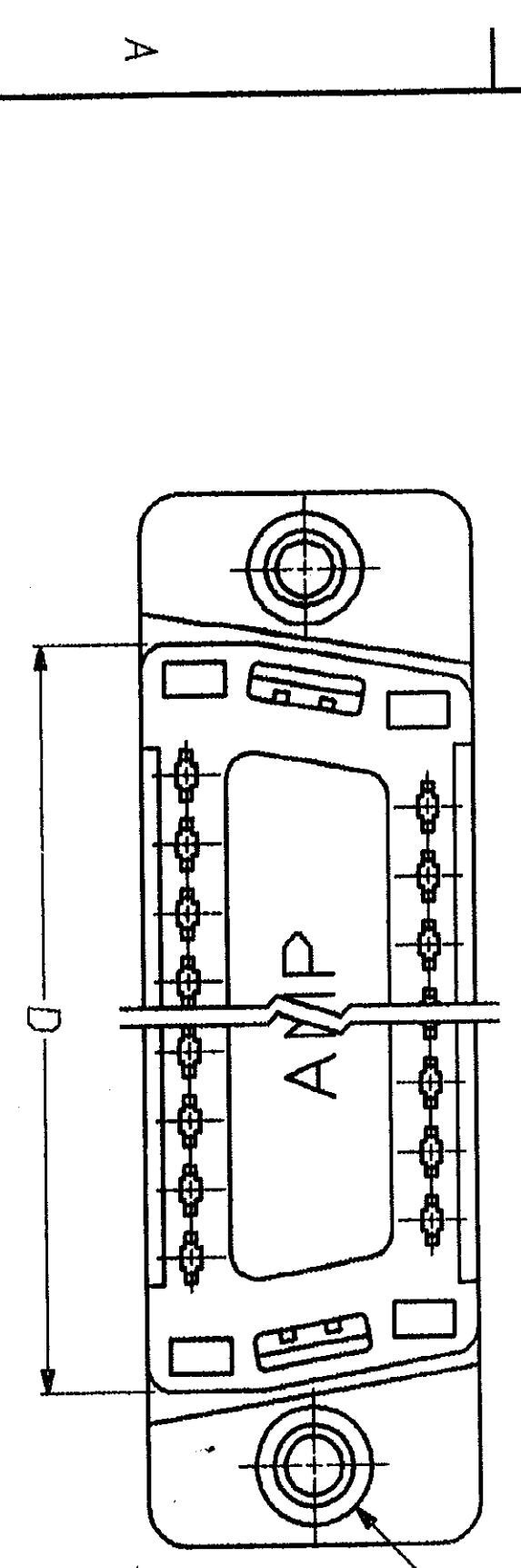
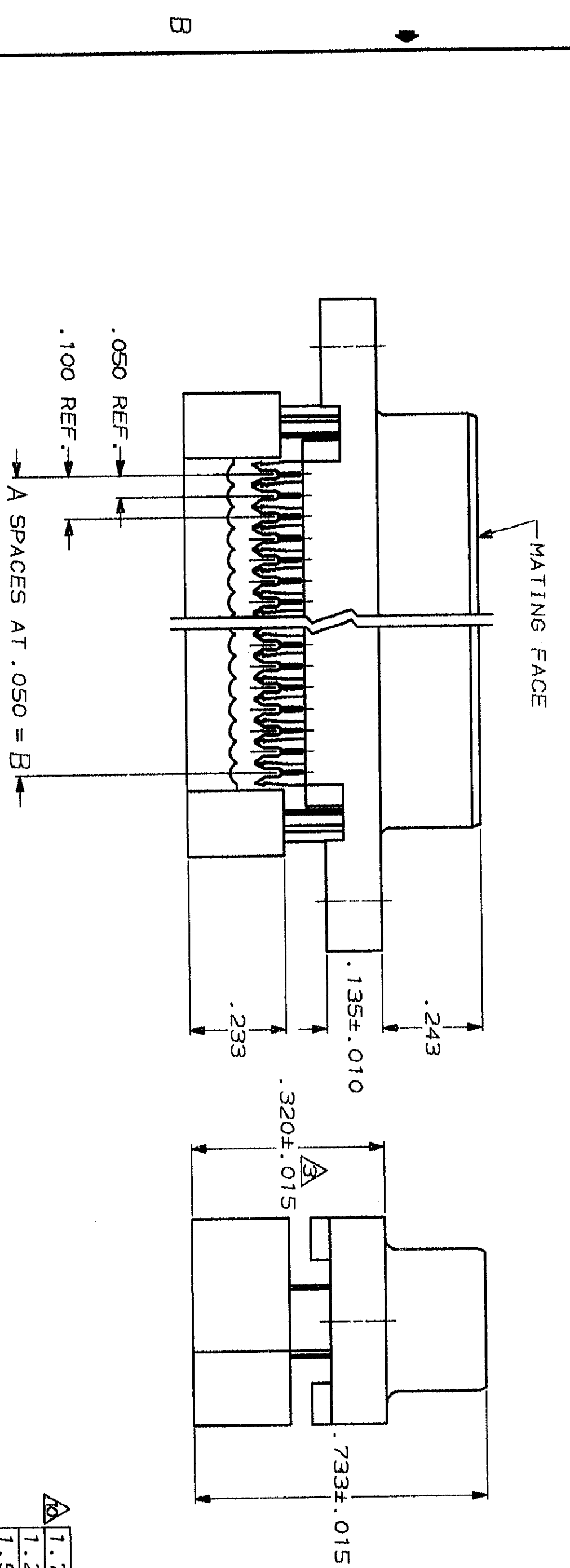
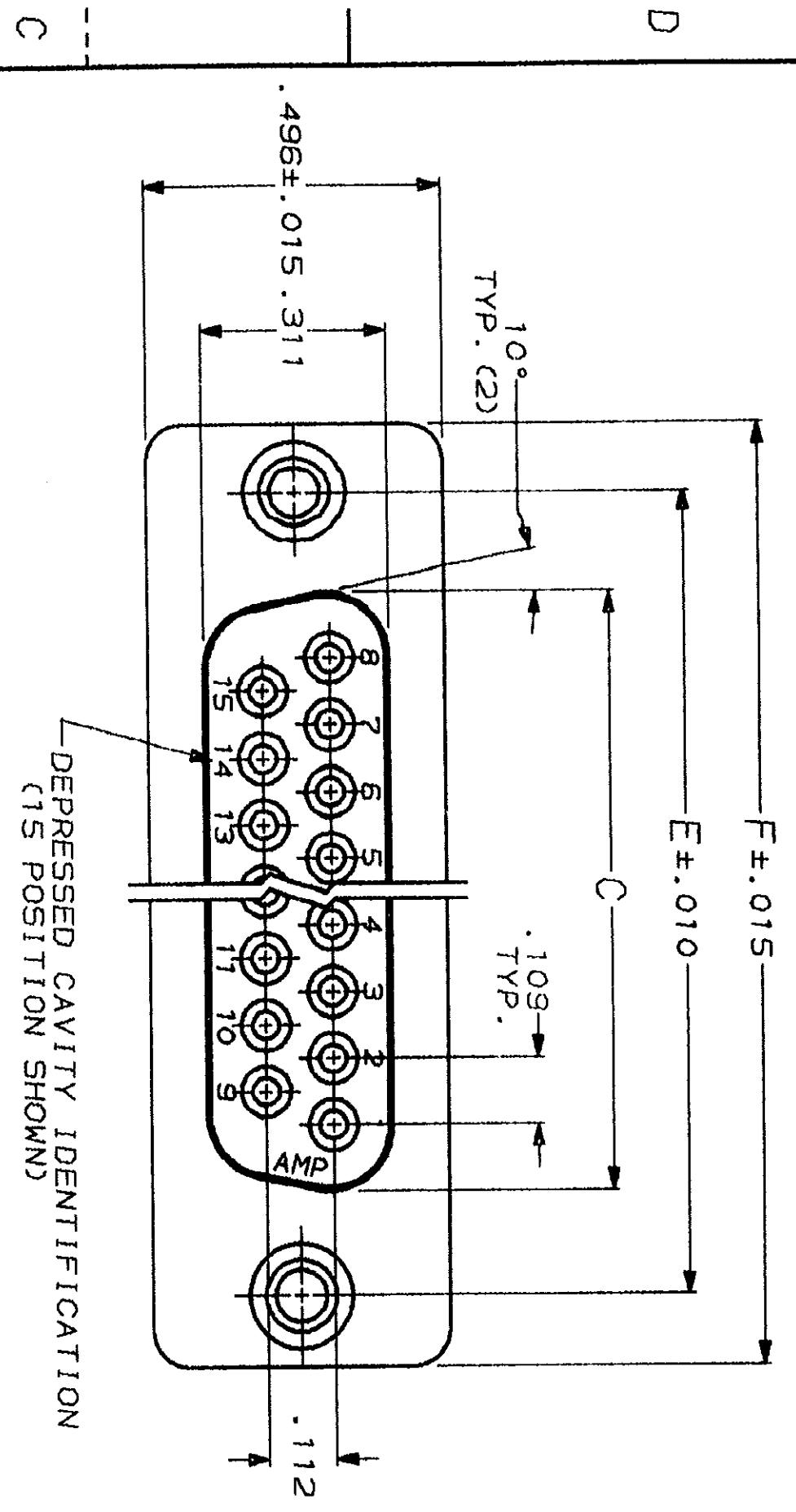


DRAWING MADE IN THIRD ANGLE PROJECTION
 THIS DRAWING IS UNPUBLISHED. RELEASED FOR PUBLICATION
 © COPYRIGHT 19 BY AMP INCORPORATED, HARRISBURG, PA. ALL INTERNATIONAL RIGHTS RESERVED. AMP PRODUCTS MAY BE COVERED BY U.S. AND FOREIGN PATENTS AND/OR PATENTS PENDING.



- CONNECTORS COMPLY WITH AMP SPEC. 108-40, 012 AND MATE WITH ANY SAME NUMBER POSITION PLUG CONNECTOR IN AMPLIMITE SERIES.
- CONNECTOR DESIGNED FOR 28 AND 26 AWG STRANDED AND SOLID CONDUCTOR RIBBON CABLE ON .050φ.
- DIMENSION APPLIES TO TERMINATED CONNECTOR.
- INSERTS WILL WITHSTAND 6 IN. LBS. TORQUE AND 50 LBS. PULL OUT FORCE FROM MATING FACE SIDE.
- MOLDED PARTS: FLAME RETARDANT 94V-0 RATED THERMOPLASTIC; COLOR: BLACK.
- PHOS. BRONZE PER QQ-B-750.
- BRASS PER MIL-C-50.
- GOLD PLATING PER MIL-G-45204, BRIGHT TIN PLATING PER MIL-T-10727, TIN LEAD PLATING PER MIL-P-81728, NICKEL PLATING PER QQ-N-290.
- PLATED WITH .000030 GOLD IN LOCALIZED GOLD PLATE AREA, .000100-.000200 BRIGHT TIN LEAD ON TERMINATION END, ALL OVER .000050 NICKEL ON ENTIRE CONTACT.
- ADVANCED PART NUMBER, NOT PRODUCTION TOOLED.

| REVISIONS | | | MOD | LOC | DIST | |
|-----------|---|------|-----|----------------------|------|----------|
| P | F | ZONE | LTR | DESCRIPTION | DATE | APPROVED |
| | | | | 01 REV PER ECN 0520 | J.P. | 10-18-84 |
| | | | | A REVISED ECN-CF1457 | | 10-28-87 |
| | | | | B REV PER ECN B02622 | | 2-18-88 |
| | | | | C REV PER ECN B04356 | | 08/18/90 |

| NO. | DATE | BY | DESCRIPTION | PART NO. | | | | |
|-----|-------|-------|-------------|----------|-------|----|----|----------|
| 1 | 1.764 | 1.526 | 1.287 | 1.140 | .900 | 18 | 19 | 747051-5 |
| 2 | 1.216 | .984 | .759 | .643 | .400 | 8 | 9 | 747051-4 |
| 3 | 1.541 | 1.312 | 1.087 | .971 | .700 | 14 | 15 | 747051-3 |
| 4 | 2.090 | 1.852 | 1.623 | 1.511 | 1.200 | 24 | 25 | 747051-2 |
| 5 | 2.732 | 2.500 | 2.275 | 2.159 | 1.800 | 36 | 37 | 747051-1 |

UNLESS OTHERWISE SPECIFIED DIMENSIONS ARE IN INCHES. TOLERANCES ON DECIMALS ± .005 ANGLES ± 2°

MATERIAL: MOLDED PARTS: A FINISH: CONTACTS: UNPLATED INSERTS: A

CONTRACT NO: DR J. GERACE 11-1-82
 CHK J. GERACE 11-1-82
 APPD R. LEGGETT 11-5-82
 APPD E. GILL 11-8-82

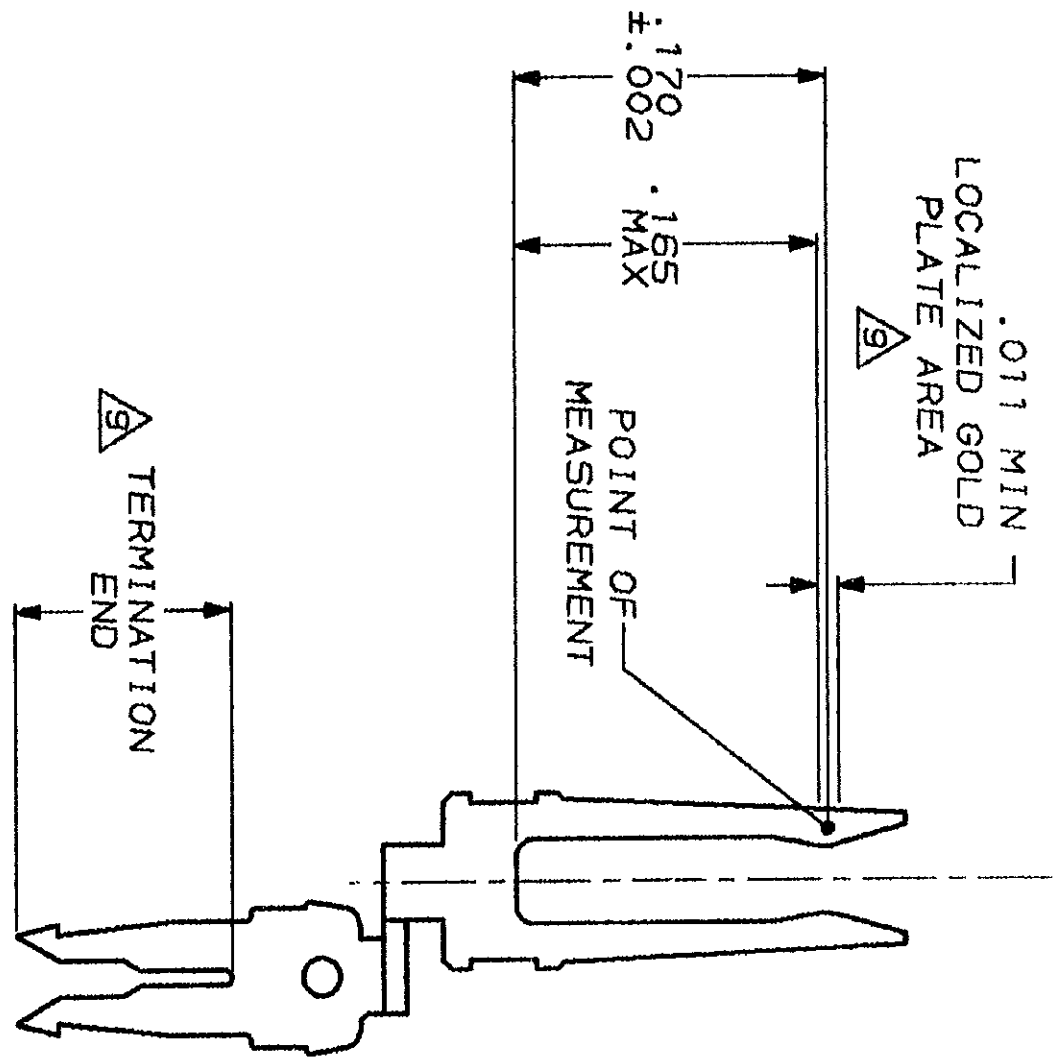
AMP INCORPORATED
 HARRISBURG, PA.

RECEPTACLE ASSEMBLY, LOW PROFILE
 HDF, W/ PREASSEMBLED COVER &
 THREADED INSERTS

SIZE: C FSCH NO: 00779 DRAWING NO: 747051
 SCALE: NTS SHEET 1 OF 2

DRAWING MADE IN THIRD ANGLE PROJECTION
 THIS DRAWING IS UNPUBLISHED. RELEASED FOR PUBLICATION
 COPYRIGHT 1987 BY AMP INCORPORATED. ALL INTERNATIONAL RIGHTS RESERVED.

| | | | | |
|-----|-----|------|-----------|-------------|
| MOD | LOC | Q137 | REVISIONS | |
| 20 | BD | 39 | P | F |
| | | | ZONE | LTR |
| | | | C | SEE SHEET 1 |
| | | | DATE | APPD |



CONTACT DETAIL
 SCALE 10:1

| | | | | |
|---|-------|-----------------------------|--|---|
| DO NOT SCALE PRINT. UNLESS SPECIFIED DIMENSIONS IN INCHES TOLERANCES ON: | | DR 11-3-87 M. EPLER | NAME RECEPTACLE ASSEMBLY, LOW PROFILE HDF, W/ PREASSEMBLED COVER & THREADED INSERTS | |
| 2 PLC DEC # | -.005 | CHK 11-3-87 W. G. LENKER | AMP | AMP INCORPORATED Harrisburg, Pa. 17105 |
| 3 PLC DEC # | 2° | APPD - | SIZE | FSCH NO |
| MATERIAL | - | PRODUCT SPEC | C | 00779 |
| FINISH | - | APPLICATION SPEC | SCALE | NTS |
| WEIGHT | - | | DRAWING NO | 747051 |
| | | | SHEET | 2 OF 2 |

AMP 1471-B REV 3-87
 19 SEP 1990 14:24:40 AMP7098

CUSTOMER DRAWING

747051